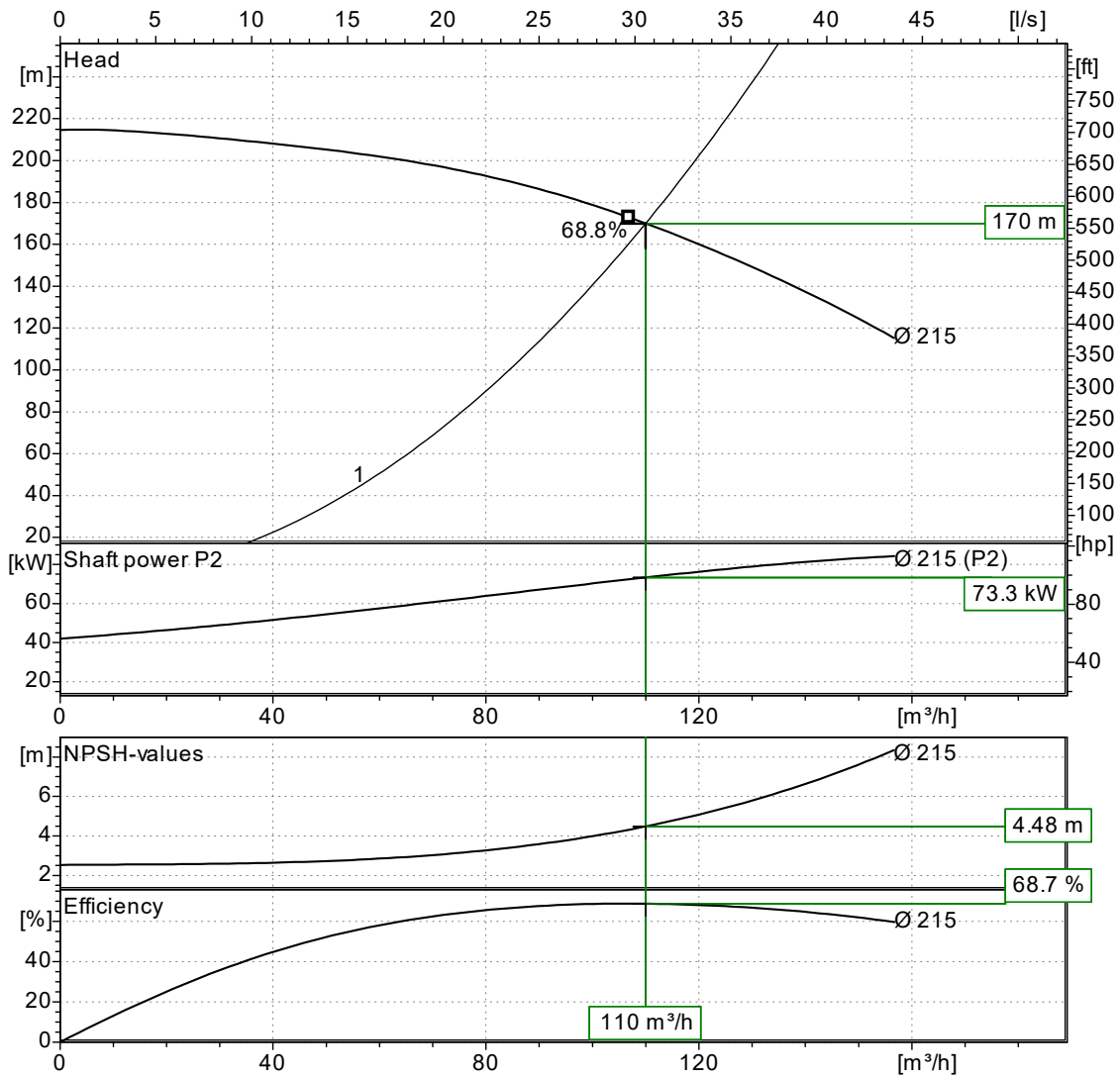


Company		Date	04/08/2020
Project		Item	
Pump	SKM 80/3	Ref No.	

Operating Point Data

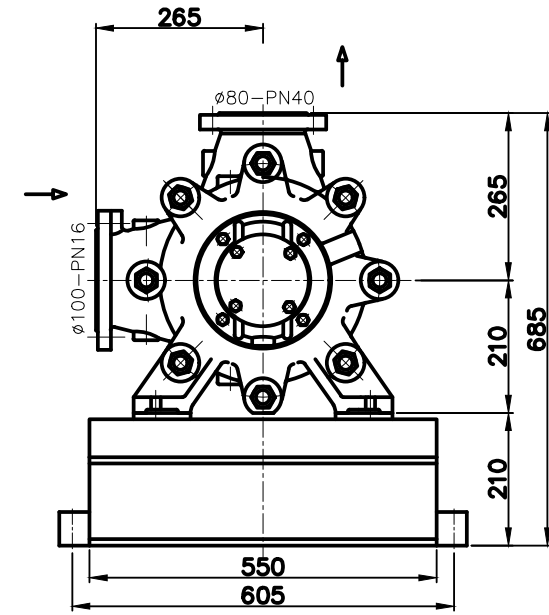
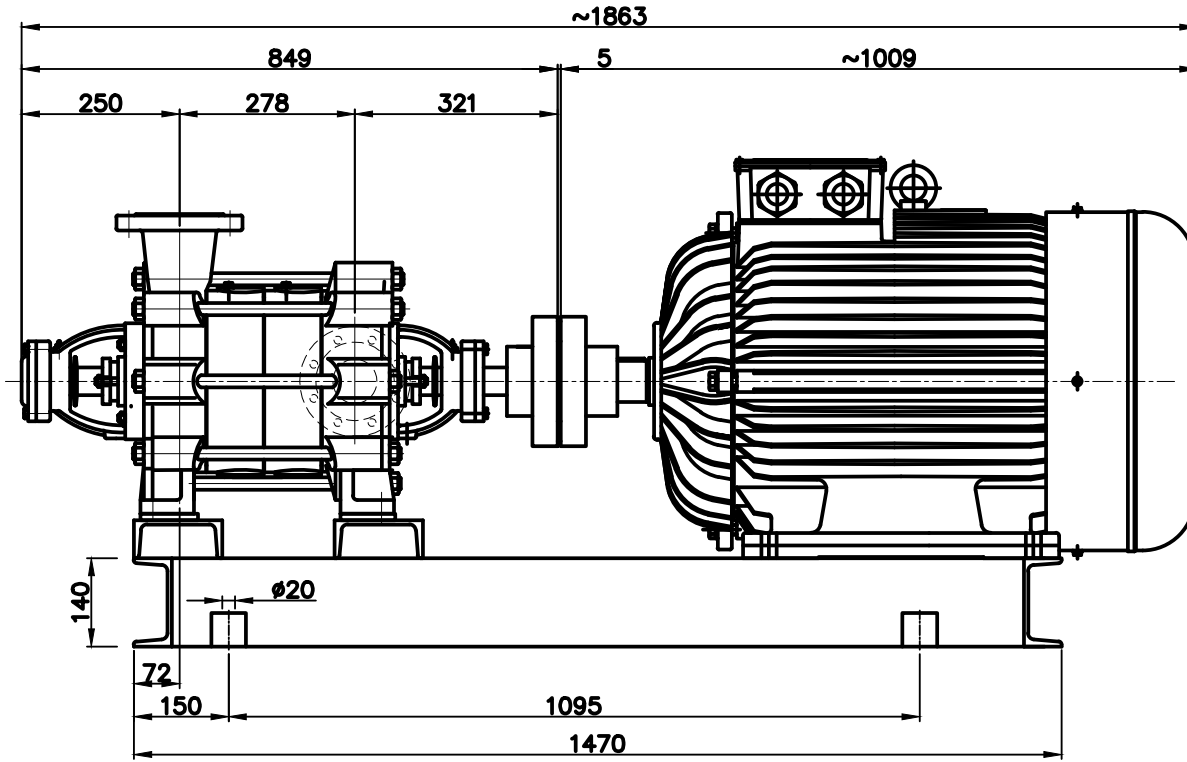
Capacity:	110.0 m ³ /h	NPSHr:	4.5 m
Head:	170.0 m	Motor Power:	90.00 kW
Efficiency (%):	68.7	Speed:	2980 rpm
Power at Duty Point:	73.3 kW	Frequency:	50 Hz
Max. Shaft Power:	84.3 kW	Density:	998.30 kg/m ³



Curves compatible with ISO 9906:2012 Gr 3B

NPSHa > NPSHr + 1m

Created by:



**Teknik resim ölçüleri takribidir.

-Provisional drawing.

**Tesisat montajında kullanılmak üzere verilmiş kesin ölçüler değildir.

-Dimensions shall not be considered as exact to use in your installation.

**Farklı motor tiplerinden dolayı ölçüler değişiklik gösterebilir.

-Dimensions may vary due to different motor types

**Ölçülerde değişiklik yapma hakkımız saklıdır.

-To change the dimensions without notice right reserved

POMPA TİPİ
PUMP TYPE

SKM-80/3

Motor

Tipi
Type

Güç / Devir
Power / Speed

280-M2

90kW-2900rpm

Standart
POMPA ve MAKİNA SAN.TİC.A.Ş.

BU ÇİZİM VEYA TASARIMIN HERHAKKI MAHFUZDUR.HERHANGİ BİR AMAÇLA KOPYA EDİLEMEZ VE ÇOGALTILAMAZ
ALL RIGHTS RESERVED CAN NOT BE COPIED AND REPRODUCED.FOR ANY PURPOSE WITHOUT PERMISSION.

ANG03-07-11-00